

Putting Cable to the Test for Maximum 4K UHD HDBaseT™ Performance

Warren Chornohus
HDBaseT Trainer
Belden



2017 BICSI *Fall*
CONFERENCE & EXHIBITION
SEPTEMBER 24-28 | LAS VEGAS, NV

Agenda

- Standards Involved
- Convergence
- HDBaseT Signal
- Belden Testing
- Results
- Bundling and Power
- Conclusion



2017 BICSI *Fall*
CONFERENCE & EXHIBITION
SEPTEMBER 24-28 | LAS VEGAS, NV



Standards Involved



2017 BICSI *Fall*
CONFERENCE & EXHIBITION
SEPTEMBER 24-28 | LAS VEGAS, NV

Networking Standards

- EIA/TIA
 - 568 C -2 Category Cabling
 - 607 C – Grounding and Bonding
- ISO 11801
- BICSI
 - TDMM
- IEEE
 - 802.3 – Ethernet



2017 BICSI *Fall*
CONFERENCE & EXHIBITION
SEPTEMBER 24-28 | LAS VEGAS, NV

AV Standards



HDBaseT 2.0



IEEE 1191*



*Currently in draft



2017 BICSI *Fall*
CONFERENCE & EXHIBITION
SEPTEMBER 24-28 | LAS VEGAS, NV



Convergence



2017 BICSI *Fall*
CONFERENCE & EXHIBITION
SEPTEMBER 24-28 | LAS VEGAS, NV

Technology Convergence

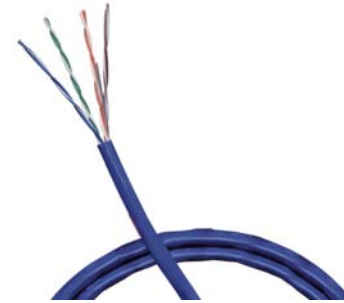
- The combination of technology on a single network (Ethernet)
 - Voice over IP
 - Audio over IP
 - Video over IP



2017 BICSI *Fall*
CONFERENCE & EXHIBITION
SEPTEMBER 24-28 | LAS VEGAS, NV

Infrastructure Convergence

- The use of data cabling (i.e. Category Cable) to support different applications
 - Class 2 Circuits for Remote Signaling
 - Audio – Dante
 - Video – Include HDBaseT



Readily available at a low cost, but is it the best solution?



2017 BICSI *Fall*
CONFERENCE & EXHIBITION
SEPTEMBER 24-28 | LAS VEGAS, NV



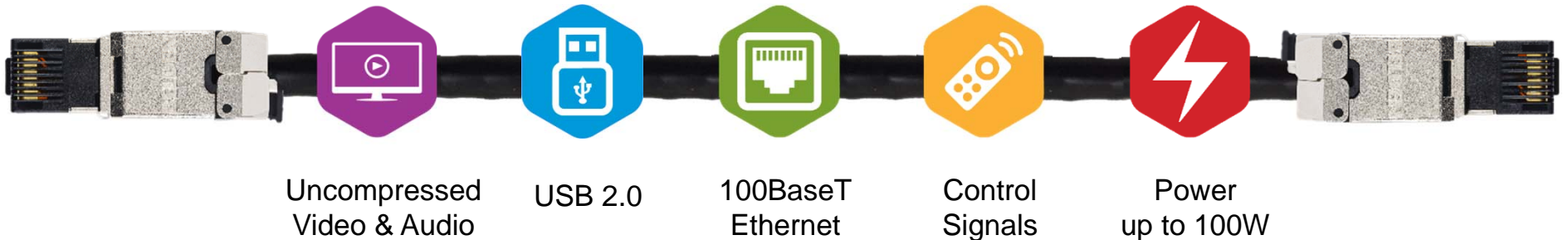
HDBaseT Signal



2017 BICSI *Fall*
CONFERENCE & EXHIBITION
SEPTEMBER 24-28 | LAS VEGAS, NV

More Than Just Video or HDMI

HDBaseT™ 5Play™*



*HDBaseT and 5Play are Trademarks of HDBaseT Alliance

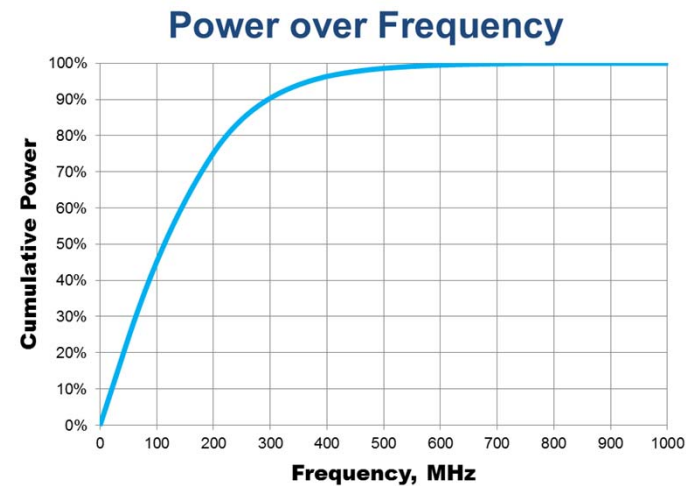


2017 BICSI *Fall*
CONFERENCE & EXHIBITION
SEPTEMBER 24-28 | LAS VEGAS, NV

Frequency Response

- Frequency Response of HDBaseT 4K/UHD Signal

- Area under curve is power defining HDBaseT signal
- PAM16, 8.91Gbps
- Nearly all power (94%) is under 425 MHz



2017 BICSI *Fall*
CONFERENCE & EXHIBITION
SEPTEMBER 24-28 | LAS VEGAS, NV

Video Need for Speed

- Ultra High Bandwidth of high quality 4K video over HDBaseT

Color Depth	Frame Rate	Chroma Subsampling	Pixel Clock	8-Bit Color Bandwidth
8 bit	30 Hz	4:4:4	297MHz	8.91 Gbps
8 bit	60 Hz	4:2:0	297MHz	8.91 Gbps

What's Next?

8K, Screen, 16 bits color, HDR* and 4:4:4 ~ 71.28 Gbps

*High Dynamic Range



2017 BICSI *Fall*
CONFERENCE & EXHIBITION
SEPTEMBER 24-28 | LAS VEGAS, NV

Issues in Market

- What cable to use to transmit 4K over HDBaseT?
- What distance can I run?
- What is an acceptable picture quality?
- What impact does noise or bundling have on the cable performance and distance?
- Professional AV Market tendency to go to higher & higher category rating
 - Diverged from original “simplistic” cabling approach
 - Cat 7A – 22 AWG/foil shielded pairs/braid



2017 BICSI *Fall*
CONFERENCE & EXHIBITION
SEPTEMBER 24-28 | LAS VEGAS, NV



Belden Testing



2017 BICSI *Fall*
CONFERENCE & EXHIBITION
SEPTEMBER 24-28 | LAS VEGAS, NV

Belden Testing Goals

- Determine key cable characteristics that drive best HDBaseT performance for 4K
- Understand idiosyncrasies of higher bandwidth needs for 4K/UHD
 - 100 Meter (understand distance limitations)
 - Bundled cabling
 - Power Rating POH
 - Passing criteria: $< 10^{-9}$ = 1 error per 1 billion pixels



2017 BICSI *Fall*
CONFERENCE & EXHIBITION
SEPTEMBER 24-28 | LAS VEGAS, NV

HDMI Testing Standard

- HDMI – Set standard for commercial video quality
 - Uncompressed
 - Used as video transport for HDBaseT
 - Gold standard for testing criteria (Less than 1 in Billion)

Pass/Fail Standard: Transfer quality 1
 10^{-9} = 1 error per 1 billion pixels



2017 BICSI *Fall*
CONFERENCE & EXHIBITION
SEPTEMBER 24-28 | LAS VEGAS, NV

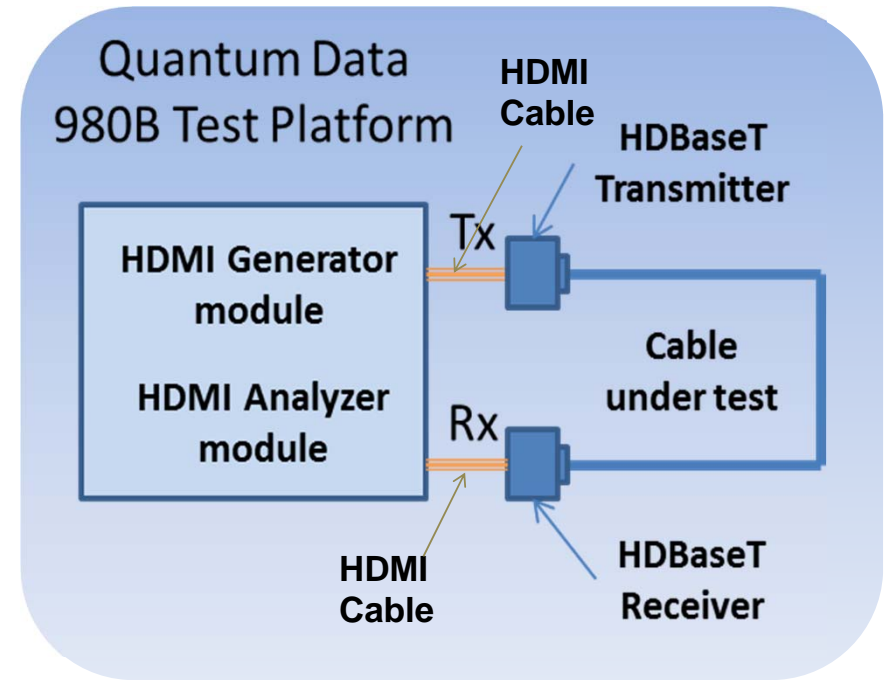
Test Setup

Quantum Data Analyzer Setting

Resolution	Aspect Ratio	Color Depth	Frame Rate	Chroma Subsampling
4K UHD	16:9	8 bit	30 Hz	4:4:4

Extenders Used:

- Common commercially available extenders rated for 4K/100 m and 70 m
- Matrix switcher rated for 4K – bundled testing



2017 BICSI *Fall*
CONFERENCE & EXHIBITION
SEPTEMBER 24-28 | LAS VEGAS, NV

Belden Testing

- Over 30 different types type of cables from Belden and other manufacturers
- 100 meter direct connect links using a Cat 6A field plug
- Sent 4K signal from Quantum Data analyzer and measured return signal on it
- If able to transmit signal, number of errors per 1000 frames recorded
- Repeated signal transmission 5 times
- Trim cable 10 meters, re-connectorized and repeated steps above



2017 BICSI *Fall*
CONFERENCE & EXHIBITION
SEPTEMBER 24-28 | LAS VEGAS, NV



Results



2017 BICSI *Fall*
CONFERENCE & EXHIBITION
SEPTEMBER 24-28 | LAS VEGAS, NV

Results - Excerpt

Category	Shield	AWG	Distance (meters)
HDBaseT Cable	F/UTP	23	100
7A	S/FTP	22	100
7	S/FTP	22	100
7	S/FTP	23	90
6A	F/UTP	23	90
6A	U/UTP	23	90
6A	S/FTP	24	70
6+	F/UTP	23	90
5e	SF/UTP	24	90
Non-ethernet	STP	22 str	10

Observations:

- TIA and ISO Category requirements not sufficient for HDBaseT 4K transmission
- Cabling must meet basic Ethernet performance – up to 425 MHz
- Some correlation to AWG size; but stronger correlation to Insertion Loss



2017 BICSI *Fall*
CONFERENCE & EXHIBITION
SEPTEMBER 24-28 | LAS VEGAS, NV

Narrowing Results – Best and Worse Cables Excerpt

	Best Cable 1	Best Cable 2	Worse Cable 1	Worse Cable 2
Max Distance	100	100	80	70
Insertion Loss (Attenuation) @ 400 MHz	-35.4	-37.3	-46.9	-41.6
Worst Cap Unbalance (pf)	74.2	28.5	52.9	182.0
400 MHz Impedance AVG Value Forward	105.0 +/- 5.7	103.7 +/- 10	99.2 +/- 5.9	104.4 +/- 6.4
TCL Worst Mean (dB) 250-500 MHz	-38.4	-32.4	-39.3	-38.0
NEXT (dB) Worst 250-400 MHz	-61.1	-38.4	-48.4	-60.3
RL (dB) Worst ADSLM 300-400 MHz	-22.9	-23.9	-21.474	-23.1



2017 BICSI *Fall*
CONFERENCE & EXHIBITION
 SEPTEMBER 24-28 | LAS VEGAS, NV

Regression Analysis

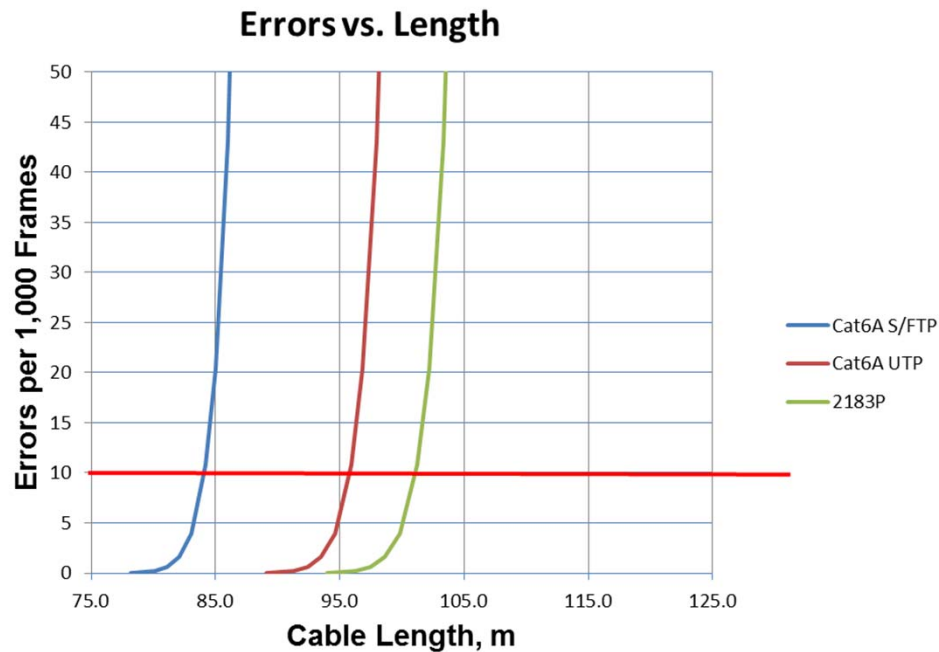
- Purpose to determine correlation between cable parameters and information capacity
 - If the Significance F is not less than 0.1 (10%) you do not have a meaningful correlation

Cable Characteristics	Significance F
Insertion Loss (IL)	0.08
Return Loss (RL)	0.22
Near End Crosstalk (NEXT)	0.18



2017 BICSI *Fall*
CONFERENCE & EXHIBITION
SEPTEMBER 24-28 | LAS VEGAS, NV

Insertion Loss Analysis



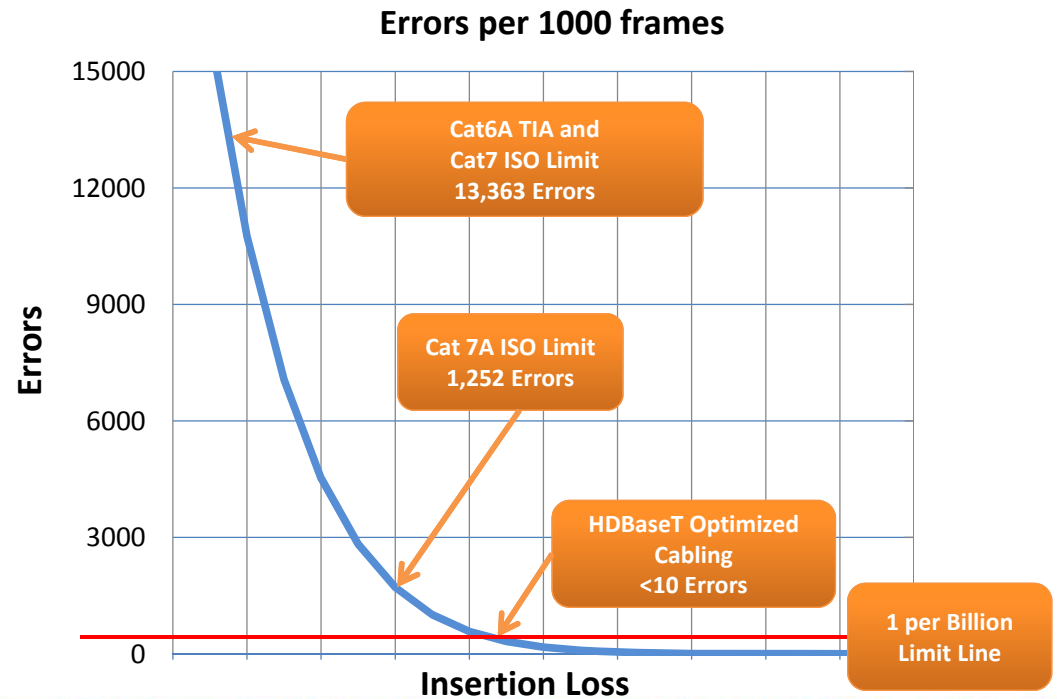
- Cable lengths that provide fewest errors were dependent on cable construction
- Number of errors increases exponentially



2017 BICSI *Fall*
CONFERENCE & EXHIBITION
SEPTEMBER 24-28 | LAS VEGAS, NV

Minimizing Pixel Errors

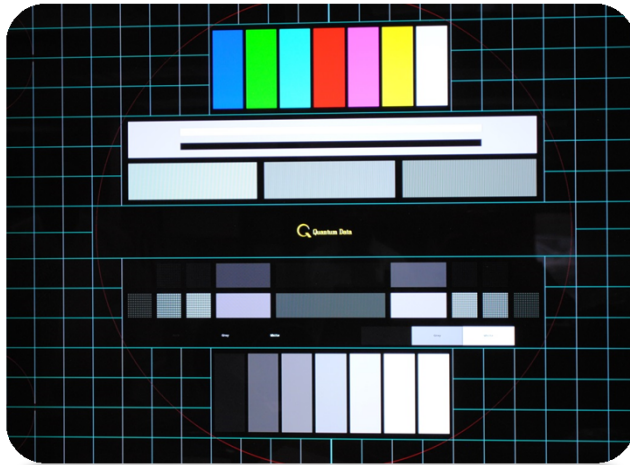
- Insertion loss of cabling designed for HDBaseT 4K UHD is better than category cabling
- 10 errors per 1000 frames is same as 1 per billion



2017 BICSI *Fall*
CONFERENCE & EXHIBITION
SEPTEMBER 24-28 | LAS VEGAS, NV

Visual Errors

Good Quality



Issue: Unpredictable

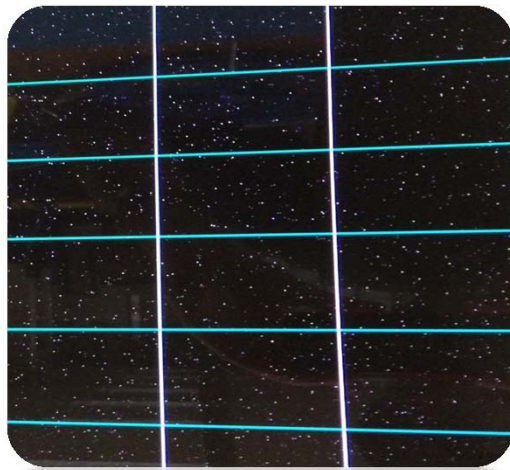
- Location of errors on monitor
- Grouping of errors on monitor
- Dependent upon distance to monitor
- Overlapping – Not clear cut



2017 BICSI *Fall*
CONFERENCE & EXHIBITION
SEPTEMBER 24-28 | LAS VEGAS, NV

Visual Errors

Poor Quality



Conclusion:

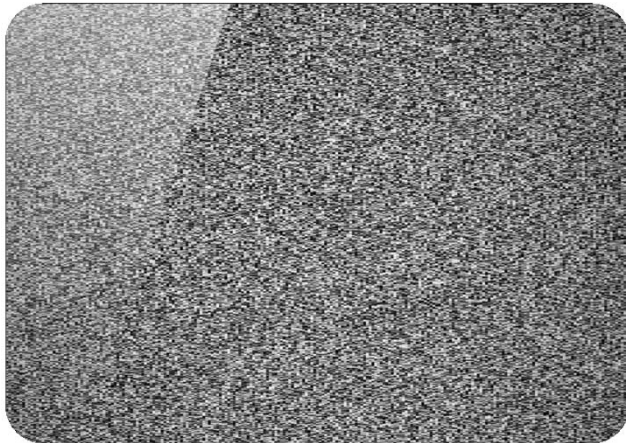
- 1 error per billion ensures quality



2017 BICSI *Fall*
CONFERENCE & EXHIBITION
SEPTEMBER 24-28 | LAS VEGAS, NV

Visual Errors

No Picture



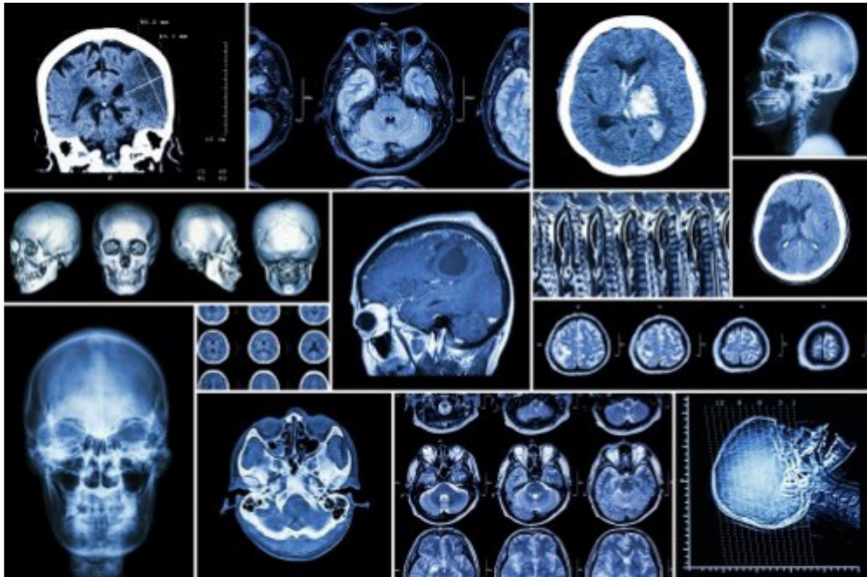
Worst Case:

- Intermittent to no picture!



2017 BICSI *Fall*
CONFERENCE & EXHIBITION
SEPTEMBER 24-28 | LAS VEGAS, NV

Visual Errors



What's Important?



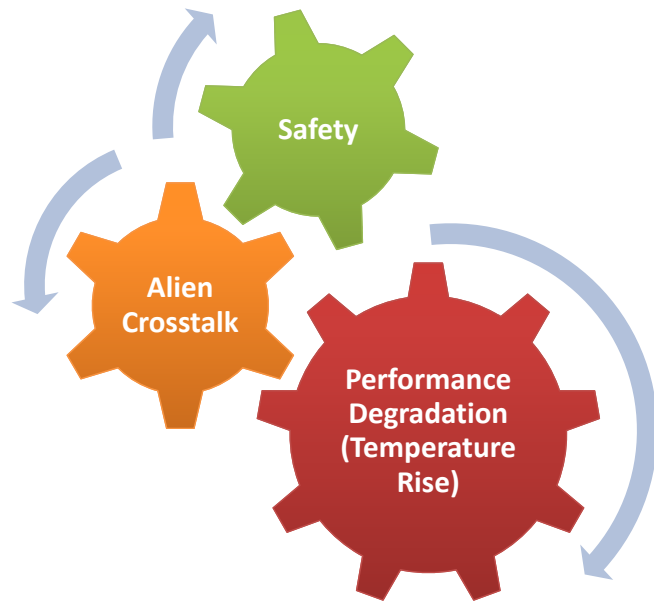
2017 BICSI *Fall*
CONFERENCE & EXHIBITION
SEPTEMBER 24-28 | LAS VEGAS, NV

Bundling and Power



2017 BICSI *Fall*
CONFERENCE & EXHIBITION
SEPTEMBER 24-28 | LAS VEGAS, NV

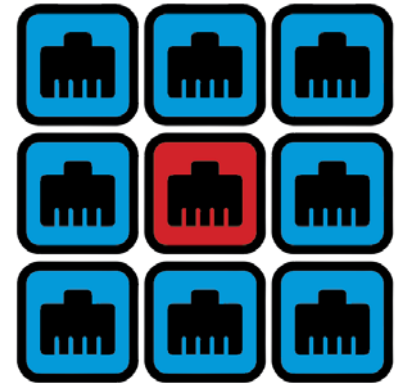
Issues with Bundling



2017 BICSI *Fall*
CONFERENCE & EXHIBITION
SEPTEMBER 24-28 | LAS VEGAS, NV

Bundling and Alien Crosstalk

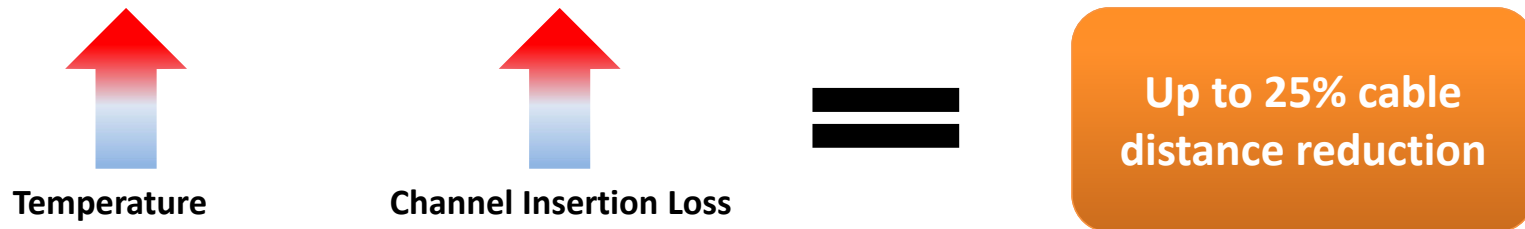
- HDBaseT signal is very susceptible to alien crosstalk
 - Recent testing
 - 8 around one (worst case connector testing)
 - Shielded cables recommended when bundling
 - Only overall foil shield necessary to protect signal
 - Category rating not factor if shielded
 - Cat 6A required if unshielded



2017 BICSI *Fall*
CONFERENCE & EXHIBITION
SEPTEMBER 24-28 | LAS VEGAS, NV

Bundling and Heat Degradation

- HDBaseT 2.0 Spec
 - **9.18 PoH Annex A: Maximum number of cables per bundle**
- Shielding can help dissipate heat build up
- Install bundles in open air or tray



2017 BICSI *Fall*
CONFERENCE & EXHIBITION
SEPTEMBER 24-28 | LAS VEGAS, NV

Bundling – NEC Safety

- Communication cables carrying over 60 watts power
- Meet bundle size chart for gage and temperature rating (NFPA 725.144)
- Or have separate Limited Power Rating (LP)
 - Cable is rated by the maximum current per conductor
 - LP (0.5A) can handle up to 100 watts for 4 pair cable
 - HDBaseT maximum power
- Does not cover the performance of cables



2017 BICSI *Fall*
CONFERENCE & EXHIBITION
SEPTEMBER 24-28 | LAS VEGAS, NV

Power over HDBaseT - PoH

- How is being used today
 - Power transmitter or receiver
- Potential to power a small display or camera



RX or TX



2017 BICSI *Fall*
CONFERENCE & EXHIBITION
SEPTEMBER 24-28 | LAS VEGAS, NV

PoH

- Compatible with IEEE 802.3at and standard IEEE 802.3af
 - Input power 44-57v DC
 - Max current per pair – 1A
- Delivery of up to 100 watts
- Initiate all 4 pairs

- POH is fully interoperable with POE
 - Power will be driven on the twisted pair only after negotiation
 - Power level is based on the highest mutually supported
- Meet power electricity safety regulation



2017 BICSI *Fall*
CONFERENCE & EXHIBITION
SEPTEMBER 24-28 | LAS VEGAS, NV

PoH – UL4299

1. Cable Heating Test (Safety)

- Similar to UL –LP
- Measures temperature rise in bundle
 - 3 bundle sizes: 7, 61 & 192 (unlimited)
- Method
 - Apply 0.5 amps, 50v each conductor
 - Measures inner most cable
- Passing
 - Temperature rise over 25C ambient *not* > cable rating (90C)



2017 BICSI *Fall*
CONFERENCE & EXHIBITION
SEPTEMBER 24-28 | LAS VEGAS, NV

PoH – UL4299



2. Cable Elevated Temperature Performance Test

- Method:
 - Cut cable: 80m (Cat 5e); 90m (Cat 6/6A/7/7A)
 - Connect to RX & TX with 2x5m patch cords
 - Cable placed in thermal chamber
 - Temperature set at maximum temp measured in Cable Heating test
 - Runs HDBaseT Recommended Cable Test



2017 BICSI *Fall*
CONFERENCE & EXHIBITION
SEPTEMBER 24-28 | LAS VEGAS, NV



Conclusion



2017 BICSI *Fall*
CONFERENCE & EXHIBITION
SEPTEMBER 24-28 | LAS VEGAS, NV

Important to 4K HDBaseT Performance

Insertion Loss (IL)

- Better than Cat 6A or Cat 7A industry published standards

Shielding

- Reduces alien crosstalk when bundling
- Reduces heat when bundling

Patch Cords

- Use quality connector
- Use patch cords with same/better IL as horizontal cable

RX/TX rated to 100 meters for 4K

- Equipment critical

Bundling

- Limit size of bundles – may impact cable distance
- Safety – Follow NFPA 725.144 or use LP rated cables
- Use cable with PoH rating



2017 BICSI *Fall*
CONFERENCE & EXHIBITION
SEPTEMBER 24-28 | LAS VEGAS, NV

Misconceptions about HDBaseT Cabling

Category Rating

- Higher category rating does not result in better HDBaseT performance

Electricals > 425 MHz

- Electricals above 425 MHz are not relevant to HDBaseT

Braid or Individually Shielded Pairs

- No improved results with braid or individually shielded pairs in bundle testing



2017 BICSI *Fall*
CONFERENCE & EXHIBITION
SEPTEMBER 24-28 | LAS VEGAS, NV

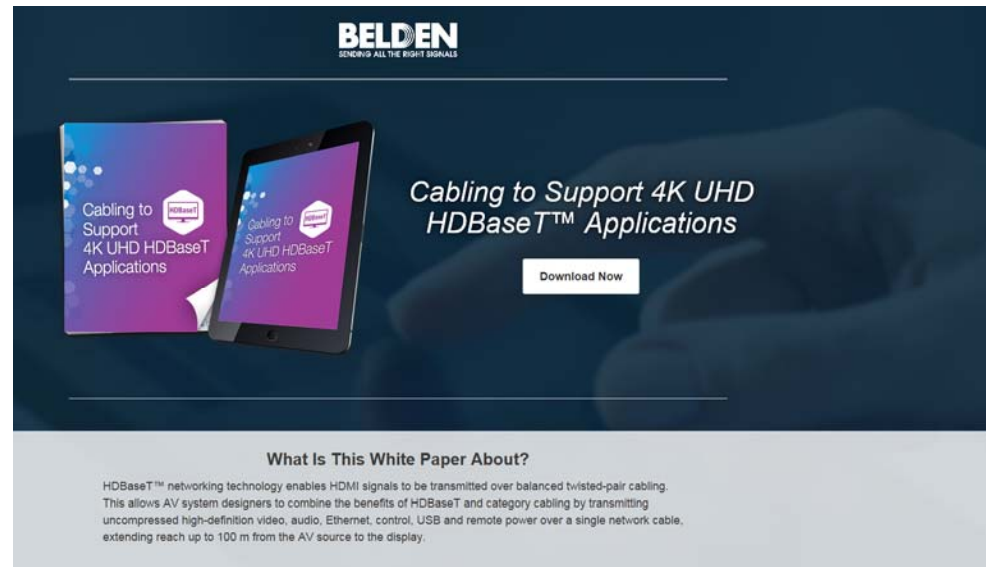
Identified Issues

- Category cables not optimized for 4K HDBaseT
- Field testing standards uncertain
- Optimum results require HDMI error limit
- Power and bundling effects transmission
- Video technology advancements will require increasing bandwidth



2017 BICSI *Fall*
CONFERENCE & EXHIBITION
SEPTEMBER 24-28 | LAS VEGAS, NV

Belden White Paper



BELDEN
SENDING ALL THE RIGHT SIGNALS

Cabling to Support 4K UHD HDBaseT Applications

Cabling to Support 4K UHD HDBaseT Applications

Cabling to Support 4K UHD HDBaseT™ Applications

Download Now

What Is This White Paper About?

HDBaseT™ networking technology enables HDMI signals to be transmitted over balanced twisted-pair cabling. This allows AV system designers to combine the benefits of HDBaseT and category cabling by transmitting uncompressed high-definition video, audio, Ethernet, control, USB and remote power over a single network cable, extending reach up to 100 m from the AV source to the display.

Info.Belden.com/hdbaset



2017 BICSI *Fall*
CONFERENCE & EXHIBITION
SEPTEMBER 24-28 | LAS VEGAS, NV

Thank You for Your Time

Warren Chornohus

Regional Sales Engineer – Broadcast & AV Solutions

warren.chornohus@belden.com

www.belden.com

(661) 645-1200



2017 BICSI *Fall*
CONFERENCE & EXHIBITION
SEPTEMBER 24-28 | LAS VEGAS, NV