

4K Cabling Truths and Misconceptions for HDBaseT Cabling

Bob Ferguson
RCDD, CTS, HDBaseT Trainer
Belden



2017 BICSI Winter Conference & Exhibition
January 22-26 • Tampa, FL

Agenda

- Standards Involved
- Convergence
- HDBaseT Signal
- Belden Testing
- Results
- Conclusion



2017

BICSI Winter Conference & Exhibition

January 22-26 • Tampa, FL



Standards Involved



2017

BICSI Winter Conference & Exhibition

January 22-26 • Tampa, FL

Networking Standards

- EIA/TIA
 - 568 C -2 Category Cabling
 - 607 C – Grounding and Bonding
- ISO 11801
- BICSI
 - TDMM
- IEEE
 - 802.3 – Ethernet



2017

BICSI Winter Conference & Exhibition

January 22-26 • Tampa, FL

AV Standards



HDBaseT 2.0



IEEE 1191*



*Currently in draft



2017

BICSI Winter Conference & Exhibition

January 22-26 • Tampa, FL



Convergence



2017

BICSI Winter Conference & Exhibition

January 22-26 • Tampa, FL

Technology Convergence

- The combination of technology on a single network (Ethernet)
 - Voice over IP
 - Audio over IP
 - Video over IP



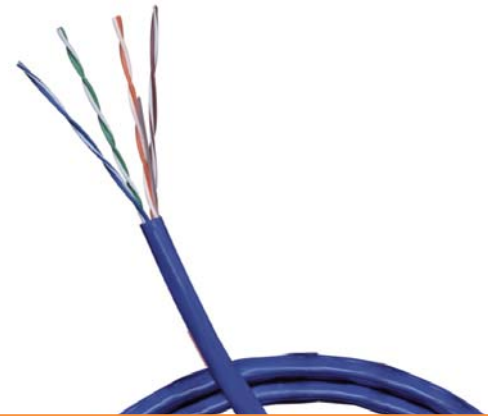
2017

BICSI Winter Conference & Exhibition

January 22-26 • Tampa, FL

Infrastructure Convergence

- The use of data cabling (i.e. Category Cable) to support different applications
 - Class 2 Circuits for Remote Signaling
 - Audio – Dante
 - Video – Include HDBaseT



Readily available at a low cost, but is it the best solution?



2017

BICSI Winter Conference & Exhibition

January 22-26 • Tampa, FL



HDBaseT Signal

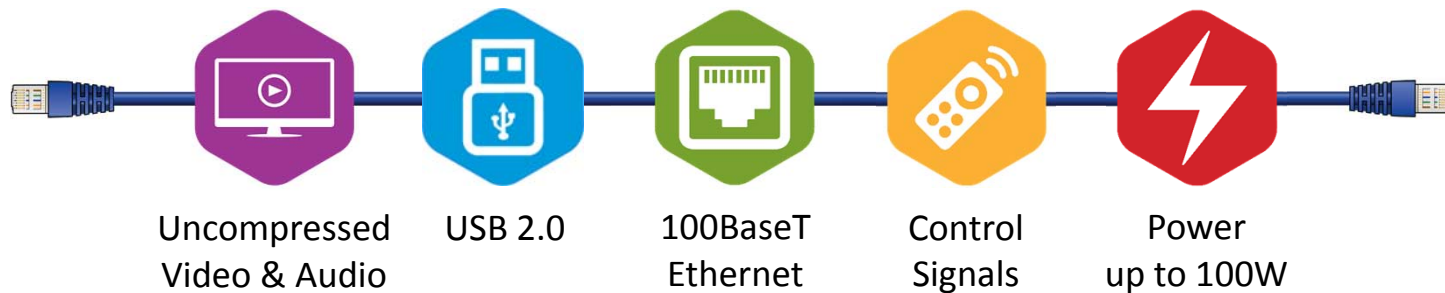


2017

BICSI Winter Conference & Exhibition

January 22-26 • Tampa, FL

More Than Just Video or HDMI



HDBaseT 5Play™*

*5Play is a trademark of HDBaseT Alliance



2017

BICSI Winter Conference & Exhibition

January 22-26 • Tampa, FL

Video Need for Speed

- Ultra High Bandwidth of high quality 4K video over HDBaseT

Color Depth	Frame Rate	Chroma Subsampling	Pixel Clock	8-Bit Color Bandwidth
8 bit	30 Hz	4:4:4	297MHz	8.91 Gbps
8 bit	60 Hz	4:2:0	297MHz	8.91 Gbps

What's Next?

8K, Screen, 16 bits color, HDR* and 4:4:4 ~ 71.28 Gbps

*High Dynamic Range



2017

BICSI Winter Conference & Exhibition

January 22-26 • Tampa, FL

Issues in Market

- What cable to use to transmit 4K over HDBaseT?
- What distance can I run?
- What is an acceptable picture quality?
- What impact does noise or bundling have on the cable performance and distance?



2017

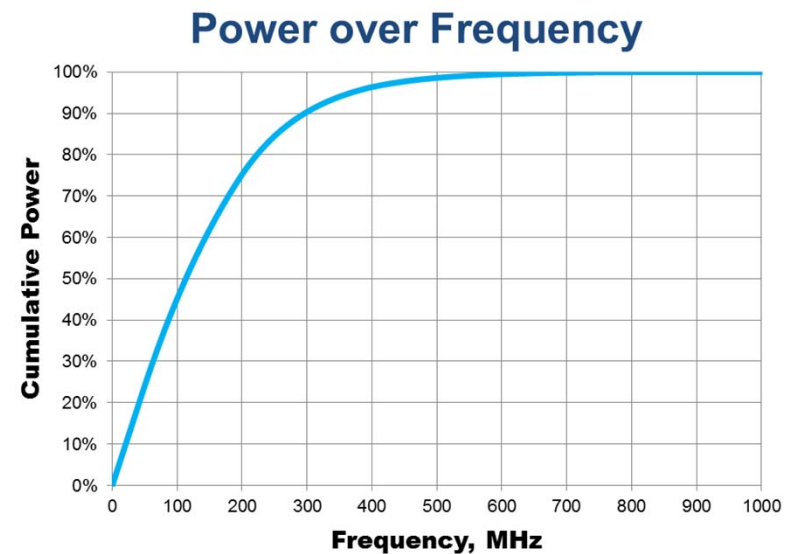
BICSI Winter Conference & Exhibition

January 22-26 • Tampa, FL

Frequency Response

- Frequency Response of HDBaseT 4K/UHD Signal

- Area under curve is power defining HDBaseT signal
- PAM16, 8.91Gbps
- Nearly all power (94%) is under 425 MHz



2017

BICSI Winter Conference & Exhibition

January 22-26 • Tampa, FL

Belden Testing Goals

- Determine key cable characteristics that drive best HDBaseT performance for 4K
- Provide distance chart for installers
 - Based on transparent testing – use same equipment on all cable
- Answer other common questions for installers:
 - Impact of bundling on shielded vs. unshielded
 - Bit error rates vs. visual impact
 - Impact of patch cords
 - Issues with PoH applications



2017

BICSI Winter Conference & Exhibition

January 22-26 • Tampa, FL



Belden Testing



2017

BICSI Winter Conference & Exhibition

January 22-26 • Tampa, FL

HDMI Testing Standard

- HDMI – Set standard for commercial video quality
 - Uncompressed
 - Used as video transport for HDBaseT
 - Gold standard for testing criteria (Less than 1 in Billion)

Pass/Fail Standard: Transfer quality 1
 10^{-9} = 1 error per 1 billion pixels



2017

BICSI Winter Conference & Exhibition

January 22-26 • Tampa, FL

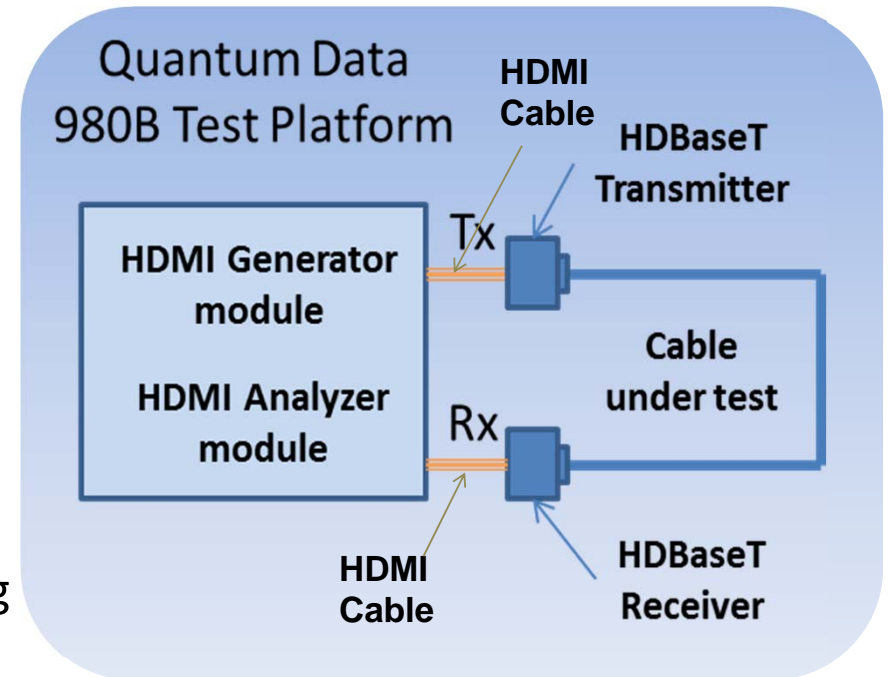
Test Setup

Quantum Data Analyzer Setting

Resolution	Aspect Ratio	Color Depth	Frame Rate	Chroma Subsampling
4K UHD	16:9	8 bit	30 Hz	4:4:4

Extenders Used:

- Common commercially available extenders rated for 4K/100 m and 70 m
- Matrix switcher rated for 4K – bundled testing



2017

BICSI Winter Conference & Exhibition

January 22-26 • Tampa, FL

Belden Testing

- Over 30 different types type of cables from Belden and other manufacturers
- 100 meter direct connect links using a Cat 6A field plug
- Sent 4K signal from Quantum Data analyzer and measured return signal on it
- If able to transmit signal, number of errors per 1000 frames recorded
- Repeated signal transmission 5 times
- Trim cable 10 meters, re-connectorized and repeated steps above



2017

BICSI Winter Conference & Exhibition

January 22-26 • Tampa, FL



Results



2017

BICSI Winter Conference & Exhibition

January 22-26 • Tampa, FL

Results - Excerpt

Category	Shield	AWG	Distance (meters)
HDBaseT	F/UTP	23	100
7A	S/FTP	22	100
7	S/FTP	22	100
7	S/FTP	23	90
6A	F/UTP	23	90
6A	U/UTP	23	90
6A	S/FTP	24	70
6+	F/UTP	23	90
5e	SF/UTP	24	90
Non-ethernet	STP	22 str	10

Observations:

- TIA and ISO Category requirements not sufficient for HDBaseT 4K transmission
- Cabling must meet basic Ethernet performance – up to 425 MHz
- Some correlation to AWG size; but stronger correlation to Insertion Loss



2017

BICSI Winter Conference & Exhibition

January 22-26 • Tampa, FL

Narrowing Results – Best and Worse Cables Excerpt

	Best Cable 1	Best Cable 2	Worse Cable 1	Worse Cable 2
Max Distance	100	100	80	70
Insertion Loss (Attenuation) @ 400 MHz	-35.4	-37.3	-46.9	-41.6
Worst Cap Unbalance (pf)	74.2	28.5	52.9	182.0
400 MHz Impedance AVG Value Forward	105.0 +/- 5.7	103.7 +/- 10	99.2 +/- 5.9	104.4 +/- 6.4
TCL Worst Mean (dB) 250-500 MHz	-38.4	-32.4	-39.3	-38.0
NEXT (dB) Worst 250-400 MHz	-61.1	-38.4	-48.4	-60.3
RL (dB) Worst ADSLM 300-400 MHz	-22.9	-23.9	-21.474	-23.1



2017

BICSI Winter Conference & Exhibition

January 22-26 • Tampa, FL

Regression Analysis

- Purpose to determine correlation between cable parameters and information capacity
 - If the Significance F is not less than 0.1 (10%) you do not have a meaningful correlation

Cable Characteristics	Significance F
Insertion Loss (IL)	0.08
Return Loss (RL)	0.22
Near End Crosstalk (NEXT)	0.18

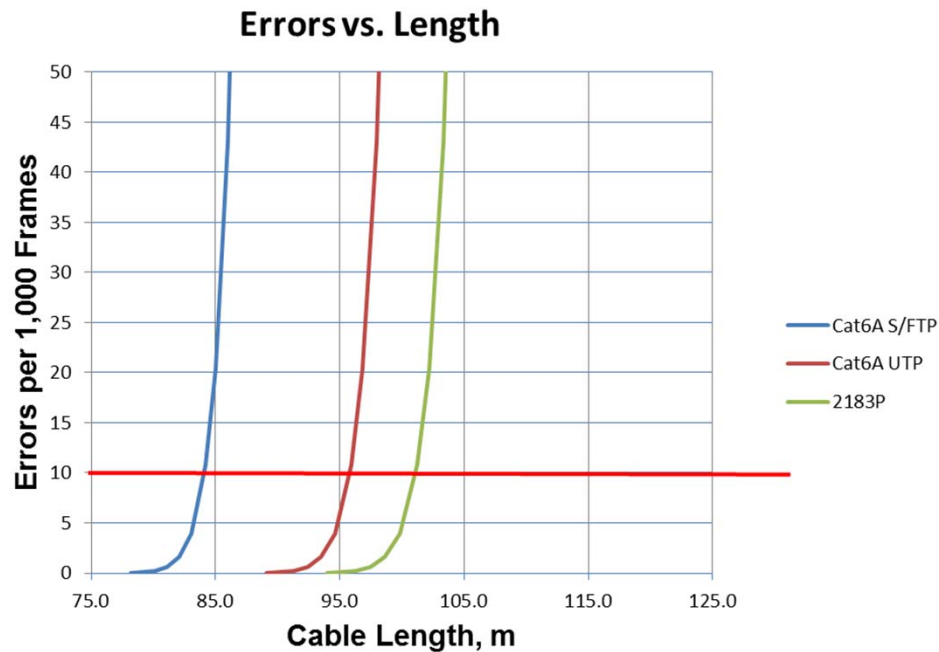


2017

BICSI Winter Conference & Exhibition

January 22-26 • Tampa, FL

Insertion Loss Analysis



- Cable lengths that provide fewest errors were dependent on cable construction
- Number of errors increases exponentially



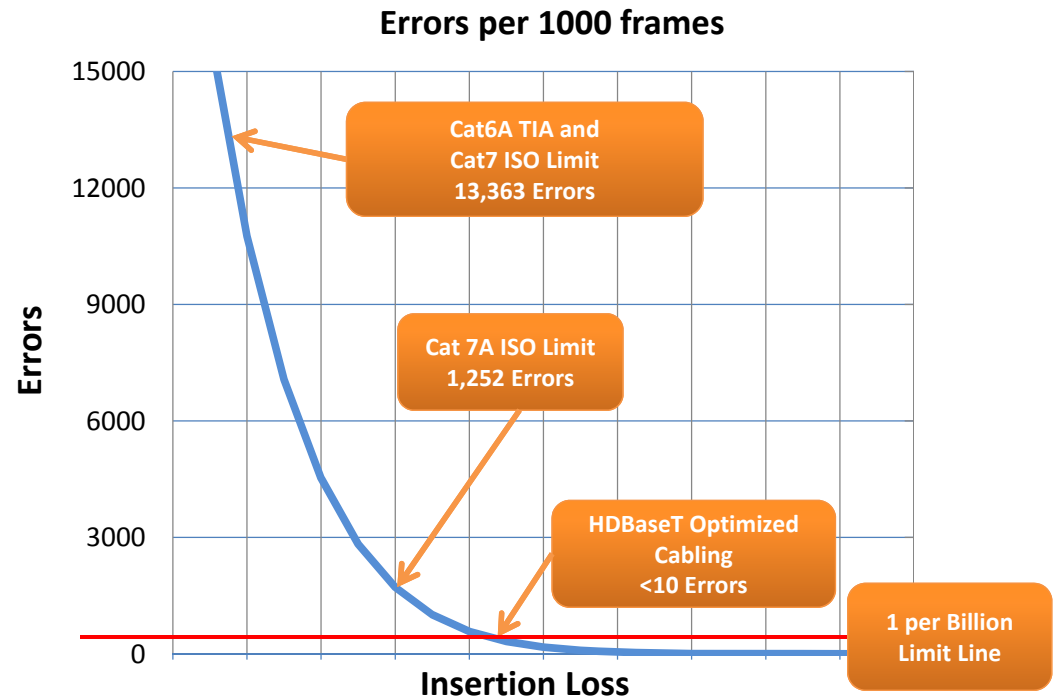
2017

BICSI Winter Conference & Exhibition

January 22-26 • Tampa, FL

Minimizing Pixel Errors

- Insertion loss of cabling designed for HDBaseT 4K UHD is better than category cabling
- 10 errors per 1000 frames is same as 1 per billion



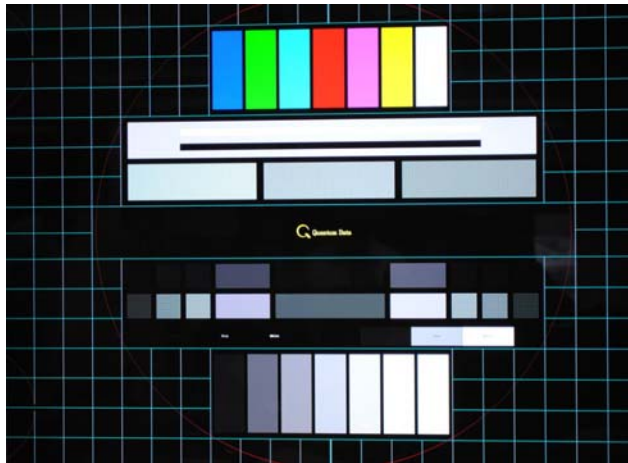
2017

BICSI Winter Conference & Exhibition

January 22-26 • Tampa, FL

Visual Errors

Good Quality



Issue: Unpredictable

- Location of errors on monitor
- Grouping of errors on monitor
- Dependent upon distance to monitor
- Overlapping – Not clear cut



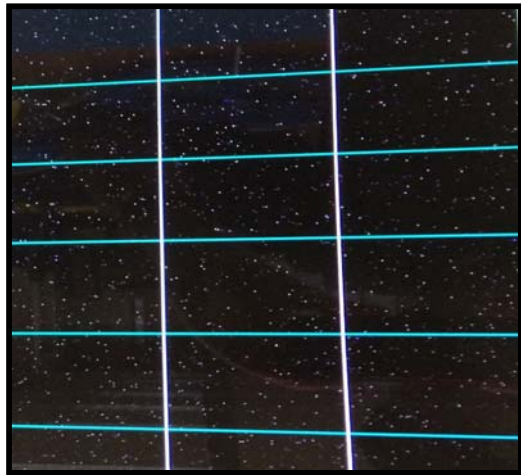
2017

BICSI Winter Conference & Exhibition

January 22-26 • Tampa, FL

Visual Errors

Poor Quality



Conclusion:

- 1 error per billion ensures quality



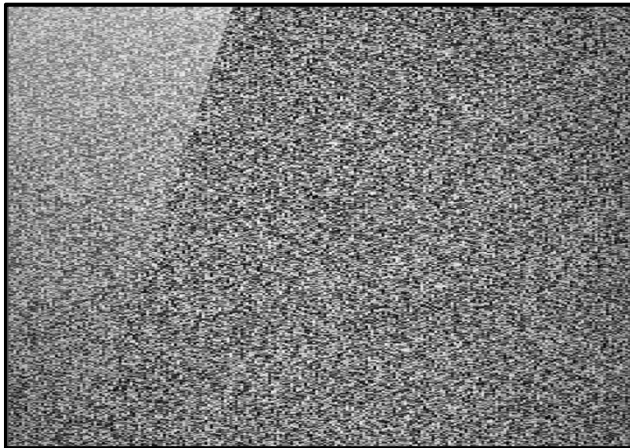
2017

BICSI Winter Conference & Exhibition

January 22-26 • Tampa, FL

Visual Errors

No Picture



Worst Case:

- Intermittent to no picture!



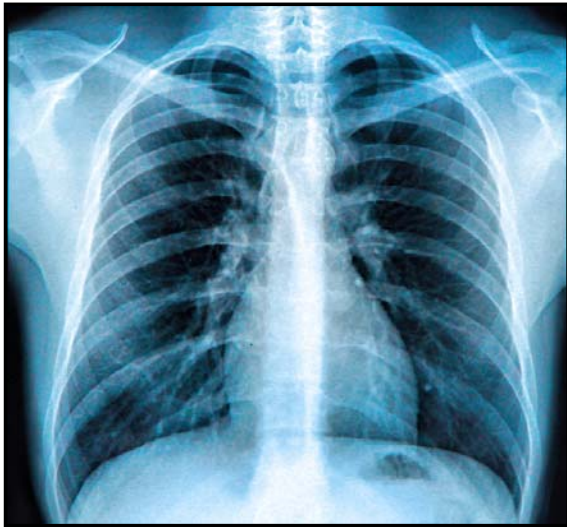
2017

BICSI Winter Conference & Exhibition

January 22-26 • Tampa, FL

Visual Errors

What's Important?



2017

BICSI Winter Conference & Exhibition

January 22-26 • Tampa, FL

Field Testers

- No standard for field testing
 - Cable that will pass 6A and Cat7A minimum, will fail HDMI standard @ 100 meters
- Lab Testing with Quantum Data 980B not practical in the field
- Recent releases of testers – still early



2017

BICSI Winter Conference & Exhibition

January 22-26 • Tampa, FL

HDBaseT 2.0/1.0 Classes

Class	HDBaseT spec	Media	Max Resolution	Supported max Cable length	Cable category
Class A	1.0	Copper	1080p 4K	100m 70m	Cat5e Cat5e
Class B	1.0	Copper	1080p 4K	70m 35m	Cat6a Cat5e
Class C	2.0	Copper	1080p 4K 4K	100m 90m 100m	Cat5e Cat5e Cat6a
Class D	2.0	Copper	1080p	30m	Cat6a
Class E	2.0	Fiber	4K		

* Information from HDBaseT Alliance



2017

BICSI Winter Conference & Exhibition

January 22-26 • Tampa, FL

Different chipsets

The extender model you choose makes a difference on transmission distance



- Chip sets & implementation in equipment matter
- Same equip. manufacturer - Different levels of performance in different products
- Some chip sets & equipment not capable of 100 meters



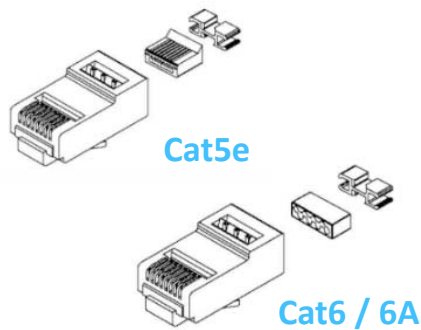
2017

BICSI Winter Conference & Exhibition

January 22-26 • Tampa, FL

Direct Connect

Crimp On Type



Performance dependent on cable construction due to crimp attachment

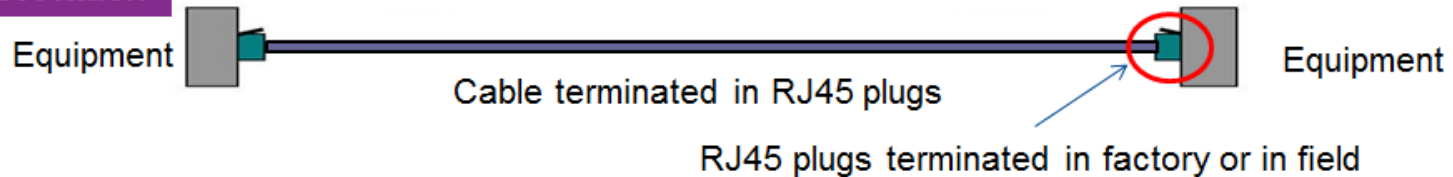
PCB Type



Cat5e / 6 / 6A

Performance not dependent on cable construction due to IDC attachment

Direct Attach



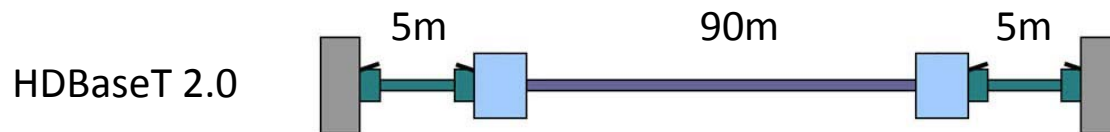
2017

BICSI Winter Conference & Exhibition

January 22-26 • Tampa, FL

2 Connector Model

- HDBaseT standard allows for two connector model shown below
- Belden testing shows you can exceed 5 meter by reducing horizontal by equal amounts
- Patch cord need equal to or better electrical performance



2017

BICSI Winter Conference & Exhibition

January 22-26 • Tampa, FL

Shielding

- Benefits
 - Shielding helps with heat dissipation
 - Reduce alien cross talk noise
- Issues
 - Potential group loops
 - Potential shorting issues
- Consult local codes for grounding safety requirements
- 607C - Recommends termination of shield on both ends



2017

BICSI Winter Conference & Exhibition

January 22-26 • Tampa, FL

HDBaseT – Shield Termination

- Floating Power Supplies
 - Connect the cable shield on one end of the cable
 - High differential voltage developed between the Tx and Rx
- PoE Implementation
 - Connect the shield on both ends of the cable
- Chassis Grounded System
 - If both sides are chassis grounded, terminate the shield on both ends
 - If one side is chassis grounded and the other is floating, connect the shield on the chassis terminated side



2017

BICSI Winter Conference & Exhibition

January 22-26 • Tampa, FL

Power over HDBaseT - PoH

- How is being used today
 - Power transmitter or receiver
- Potential to power a small display or camera



RX or TX



2017

BICSI Winter Conference & Exhibition

January 22-26 • Tampa, FL

PoH

- Compatible with IEEE 802.3at and standard IEEE 802.3af
 - Input power 44-57v DC
 - Max current per pair – 1A
- Delivery of up to 100 watts
- Initiate all 4 pairs

- POH is fully interoperable with POE
 - Power will be driven on the twisted pair only after negotiation
 - Power level is based on the highest mutually supported
- Meet power electricity safety regulation

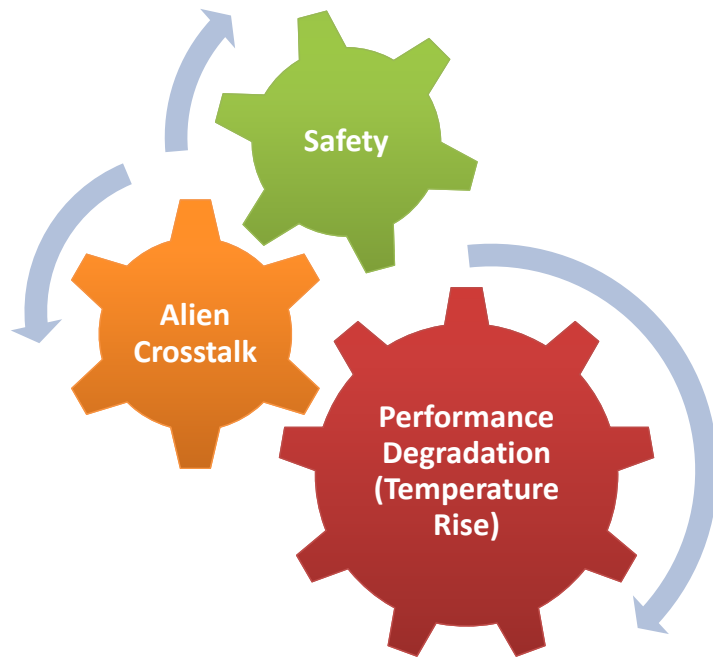


2017

BICSI Winter Conference & Exhibition

January 22-26 • Tampa, FL

Issues with Bundling



2017

BICSI Winter Conference & Exhibition

January 22-26 • Tampa, FL

Bundling – NEC Safety

- Communication cables carrying over 60 watts power
- Meet bundle size chart for gage and temperature rating (NFPA 725.144)
- Or have separate Limited Power Rating (LP)
 - Cable is rated by the maximum current per conductor
 - LP (0.5A) can handle up to 100 watts for 4 pair cable
 - HDBaseT maximum power
- Does not cover the performance of cables



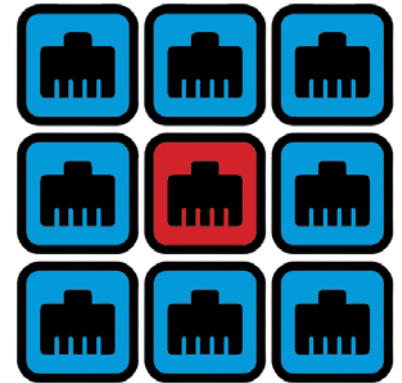
2017

BICSI Winter Conference & Exhibition

January 22-26 • Tampa, FL

Bundling and Alien Crosstalk

- HDBaseT signal is very susceptible to alien crosstalk
 - Recent testing
 - 8 around one (worst case connector testing)
 - Shielded cables recommended when bundling
 - Only overall foil shield necessary to protect signal
 - Category rating not factor if shielded
 - Cat 6A required if unshielded



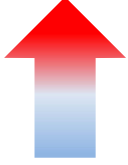
2017

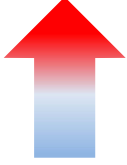
BICSI Winter Conference & Exhibition

January 22-26 • Tampa, FL

Bundling and Heat Degradation

- HDBaseT 2.0 Spec
 - **9.18 PoH Annex A: Maximum number of cables per bundle**
- Shielding can help dissipate heat build up
- Install bundles in open air or tray


Temperature


Channel Insertion Loss

=

Up to 25% cable
distance reduction



2017

BICSI Winter Conference & Exhibition

January 22-26 • Tampa, FL



Conclusion



2017

BICSI Winter Conference & Exhibition

January 22-26 • Tampa, FL

Important to 4K HDBaseT Performance

Insertion Loss (IL)

- Better than Cat 6A or Cat 7A

Shielding

- Reduces alien crosstalk
- Reduces heat when bundling

Patch Cords

- Use quality connector
- Use patch cords with same/better IL as horizontal cable

RX/TX rated to 100 meters for 4K

- Equipment critical

Bundling

- Limit size of bundles – may impact cable distance
- Safety – Follow NFPA 725.144 or use LP rated cables



2017

BICSI Winter Conference & Exhibition

January 22-26 • Tampa, FL

Misconceptions about HDBaseT Cabling

Category Rating

- Higher category rating does not result in better HDBaseT performance

Electricals > 425 MHz

- Electricals above 425 MHz are not relevant to HDBaseT

Braid or Individually Shielded Pairs

- No improved results with braid or individually shielded pairs in bundle testing



2017

BICSI Winter Conference & Exhibition

January 22-26 • Tampa, FL

Identified Issues

- Category cables not optimized for HDBaseT
- Field testing standards uncertain
- Optimum results require HDMI error limit
- Power and bundling effects transmission
- Video technology advancements will require increasing bandwidth



2017

BICSI Winter Conference & Exhibition

January 22-26 • Tampa, FL

Thank You for Your Time

Bob Ferguson

Regional Sales Engineer – Broadcast & AV Solutions

bob.ferguson@belden.com

www.belden.com

(214) 789-4626



2017

BICSI Winter Conference & Exhibition

January 22-26 • Tampa, FL